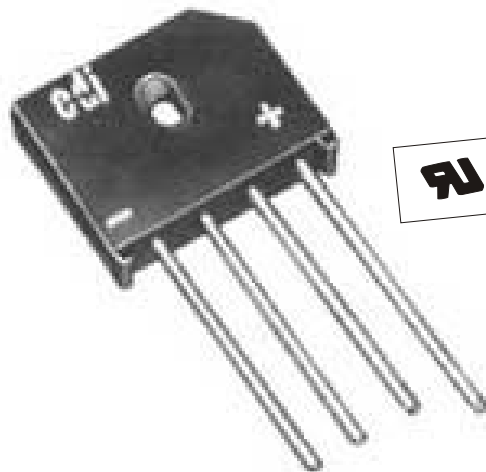




6PHR

**FAST RECOVERY
SINGLE-PHASE FULL WAVE BRIDGE
6 AMPERES
FOR P.C. BOARD AND HEAT SINK MOUNTING
200 NANOSECOND FAST RECOVERY**



This mark indicates recognition under the component program of Underwriters Laboratories, inc.

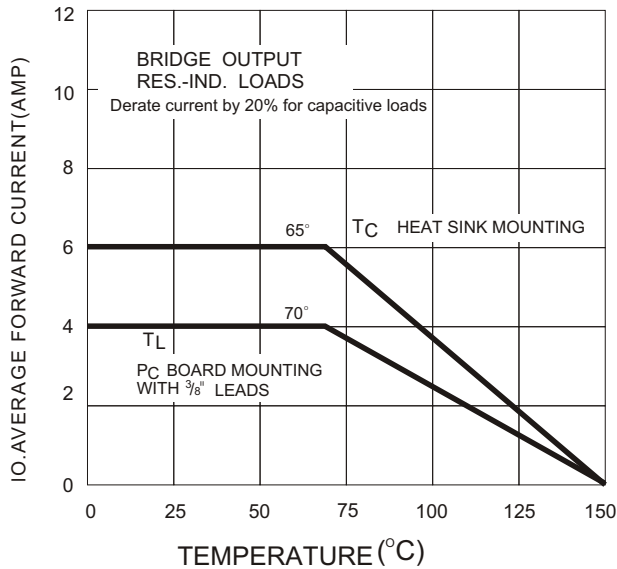
PRV/Leg	50V	100V	200V	400V	600V	800V	1000V
Type No.	6PHR05	6PHR10	6PHR20	6PHR40	6PHR60	6PHR80	6PHR100

ELECTRICAL CHARACTERISTICS PER LEG
(at $T_A=25\text{ }^\circ\text{C}$ Unless Otherwise Specified)

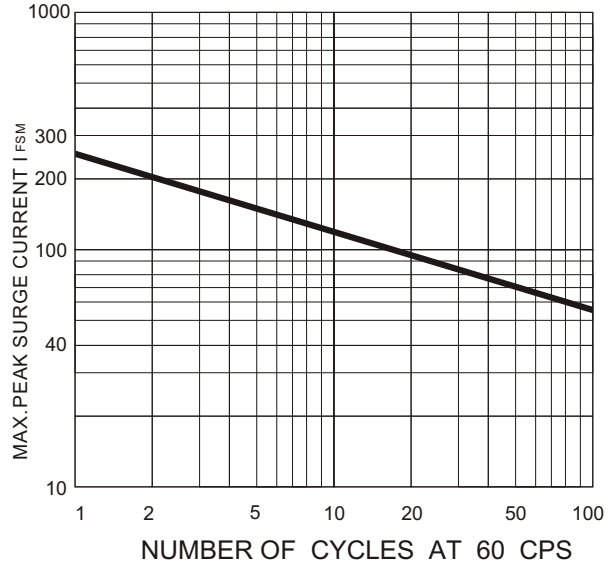
Average Output Current, I_o @ $65\text{ }^\circ\text{C}$ T_c (Fig.1)	6	Amp
Max.Forward Voltage Drop, $V_F=1.2V$ @ $I_F =$	2.5	Amp
Max.DC Reverse Current @ PRV and $25\text{ }^\circ\text{C}$, I_R	10	μA
Max.DC Reverse Current @ PRV and $100\text{ }^\circ\text{C}$, I_R	300	μA
Max.Peak Surge Current, I_{FSM} (8.3ms) (Fig.2)	240	Amp
Max. Reverse Recovery Time, T_{rr} (Fig.3)	200	Nanosec
Ambient Operating Temperature Range, T_A	-55 to+150	$^\circ\text{C}$
Storage Temperature Range, T_{STG}	-55 to+150	$^\circ\text{C}$

EDI reserves the right to change these specifications at any time without notice.

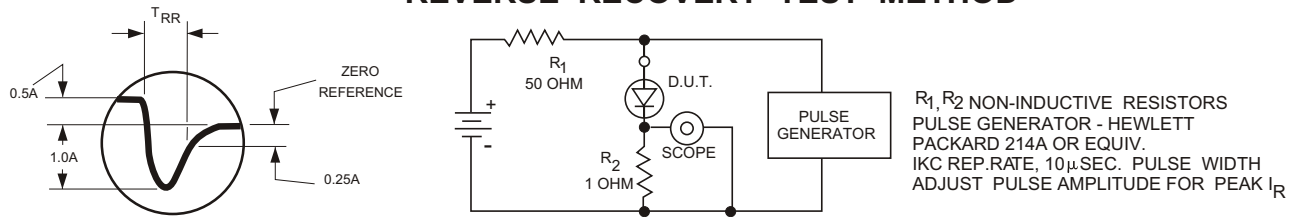
**FIG.1
CURRENT DERATING**



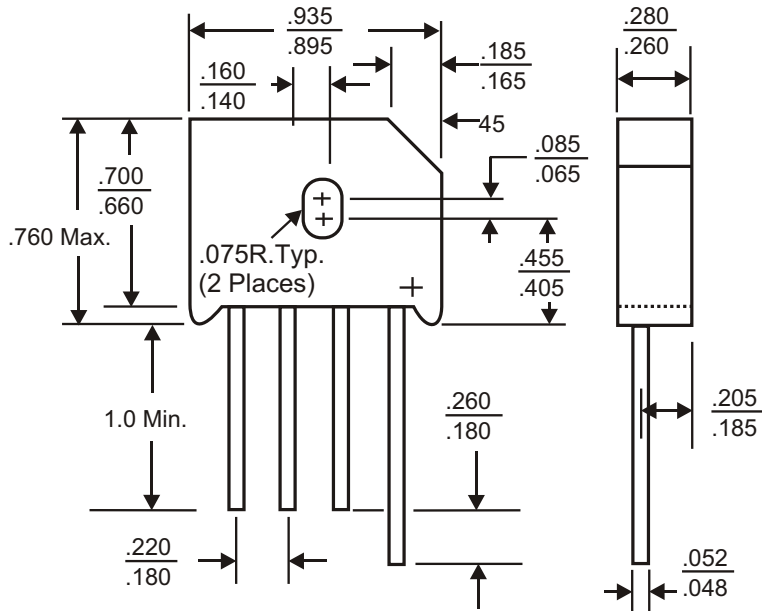
**FIG.2
NON-REPETITIVE SURGE CURRENT**



**FIG.3
REVERSE RECOVERY TEST METHOD**



CASE STYLE FOR 6PHR



Dielectric test voltage 2,500 V rms., max. 50-60Hz

NOTE Maximum lead and terminal temperature for soldering, 3/8 inch from case 5 seconds at 250 °C

ELECTRONIC DEVICES, INC. DESIGNERS AND MANUFACTURERS OF SOLID STATE DEVICES SINCE 1951.

21 GRAY OAKS AVENUE * YONKERS, NEW YORK 10710 914-965-4400 * FAX 914-965-5531 * 1-800-678-0828

e-mail: sales@edidiodes.com * website: <http://www.edidiodes.com>